



rudolfstorz<sup>®</sup>

Orthopädie | *Orthopaedics*







COBB

| 280 mm - 11"       | B      | Fig. |
|--------------------|--------|------|
| <b>1-04-006-00</b> | 2.0 mm | 0000 |
| <b>1-04-006-02</b> | 2.5 mm | 000  |
| <b>1-04-006-04</b> | 3.0 mm | 00   |
| <b>1-04-006-06</b> | 3.5 mm | 0    |
| <b>1-04-006-08</b> | 4.0 mm | 1    |
| <b>1-04-006-10</b> | 4.5 mm | 2    |
| <b>1-04-006-12</b> | 5.0 mm | 3    |
| <b>1-04-006-14</b> | 5.5 mm | 4    |
| <b>1-04-006-16</b> | 6.5 mm | 5    |
| <b>1-04-006-18</b> | 8.0 mm | 6    |

Scharfe Löffel, gerade, mit massivem Aluminiumgriff, eloxiert

*Bone curettes, straight, with massive aluminium handle, anodized*

COBB

| 280 mm - 11"       | B      | Fig. |
|--------------------|--------|------|
| <b>1-04-002-00</b> | 2.0 mm | 0000 |
| <b>1-04-002-02</b> | 2.5 mm | 000  |
| <b>1-04-002-04</b> | 3.0 mm | 00   |
| <b>1-04-002-06</b> | 3.5 mm | 0    |
| <b>1-04-002-08</b> | 4.0 mm | 1    |
| <b>1-04-002-10</b> | 4.5 mm | 2    |
| <b>1-04-002-12</b> | 5.0 mm | 3    |
| <b>1-04-002-14</b> | 5.5 mm | 4    |
| <b>1-04-002-16</b> | 6.5 mm | 5    |
| <b>1-04-002-18</b> | 8.0 mm | 6    |

Scharfe Löffel, gerade, mit hohlem rostfreiem Kreuzrändergriff

*Bone curettes, straight, with hollow, stainless knurled handle*



COBB

| 280 mm - 11"       | B      | Fig. |
|--------------------|--------|------|
| <b>1-04-008-00</b> | 2.0 mm | 0000 |
| <b>1-04-008-02</b> | 2.5 mm | 000  |
| <b>1-04-008-04</b> | 3.0 mm | 00   |
| <b>1-04-008-06</b> | 3.5 mm | 0    |
| <b>1-04-008-08</b> | 4.0 mm | 1    |
| <b>1-04-008-10</b> | 4.5 mm | 2    |
| <b>1-04-008-12</b> | 5.0 mm | 3    |
| <b>1-04-008-14</b> | 5.5 mm | 4    |
| <b>1-04-008-16</b> | 6.5 mm | 5    |
| <b>1-04-008-18</b> | 8.0 mm | 6    |

Scharfe Löffel, gebogen, mit massivem Aluminiumgriff, eloxiert

*Bone curettes, curved, with massive aluminium handle, anodized*

COBB

| 280 mm - 11"       | B      | Fig. |
|--------------------|--------|------|
| <b>1-04-004-00</b> | 2.0 mm | 0000 |
| <b>1-04-004-02</b> | 2.5 mm | 000  |
| <b>1-04-004-04</b> | 3.0 mm | 00   |
| <b>1-04-004-06</b> | 3.5 mm | 0    |
| <b>1-04-004-08</b> | 4.0 mm | 1    |
| <b>1-04-004-10</b> | 4.5 mm | 2    |
| <b>1-04-004-12</b> | 5.0 mm | 3    |
| <b>1-04-004-14</b> | 5.5 mm | 4    |
| <b>1-04-004-16</b> | 6.5 mm | 5    |
| <b>1-04-004-18</b> | 8.0 mm | 6    |

Scharfe Löffel, gebogen, mit hohlem rostfreiem Kreuzrändergriff

*Bone curettes, curved, with hollow, stainless knurled handle*



SMITH-PETERSEN

| 200 mm - 8"        | B           |
|--------------------|-------------|
| <b>1-06-005-01</b> | 6 mm - ¼"   |
| <b>1-06-005-03</b> | 9 mm - ⅜"   |
| <b>1-06-005-05</b> | 12 mm - ½"  |
| <b>1-06-005-07</b> | 16 mm - ⅝"  |
| <b>1-06-005-09</b> | 19 mm - ¾"  |
| <b>1-06-005-11</b> | 25 mm - 1"  |
| <b>1-06-005-13</b> | 32 mm - 1¼" |

Osteotome, gerade  
*Osteotomes, straight*



SMITH-PETERSEN

| 200 mm - 8"        | B           |
|--------------------|-------------|
| <b>1-06-006-01</b> | 6 mm - ¼"   |
| <b>1-06-006-03</b> | 9 mm - ⅜"   |
| <b>1-06-006-05</b> | 12 mm - ½"  |
| <b>1-06-006-07</b> | 16 mm - ⅝"  |
| <b>1-06-006-09</b> | 19 mm - ¾"  |
| <b>1-06-006-11</b> | 25 mm - 1"  |
| <b>1-06-006-13</b> | 32 mm - 1¼" |

Osteotome, gebogen  
*Osteotomes, curved*



SMITH-PETERSEN

| 200 mm - 8"        | B           |
|--------------------|-------------|
| <b>1-06-007-01</b> | 6 mm - ¼"   |
| <b>1-06-007-03</b> | 9 mm - ⅜"   |
| <b>1-06-007-05</b> | 12 mm - ½"  |
| <b>1-06-007-07</b> | 16 mm - ⅝"  |
| <b>1-06-007-09</b> | 19 mm - ¾"  |
| <b>1-06-007-11</b> | 25 mm - 1"  |
| <b>1-06-007-13</b> | 32 mm - 1¼" |

Hohlmeißel, gerade  
*Gouges, straight*



SMITH-PETERSEN

| 200 mm - 8"        | B           |
|--------------------|-------------|
| <b>1-06-008-01</b> | 6 mm - ¼"   |
| <b>1-06-008-03</b> | 9 mm - ⅜"   |
| <b>1-06-008-05</b> | 12 mm - ½"  |
| <b>1-06-008-07</b> | 16 mm - ⅝"  |
| <b>1-06-008-09</b> | 19 mm - ¾"  |
| <b>1-06-008-11</b> | 25 mm - 1"  |
| <b>1-06-008-13</b> | 32 mm - 1¼" |

Hohlmeißel, gebogen  
*Gouges, curved*



|                    |             |
|--------------------|-------------|
| <b>1-06-010-01</b> | 180 mm – 7" |
|--------------------|-------------|

Griff alleine, mit Schraube SW 3 mm, ohne Schlüssel  
Handle only, with screw SW 3 mm, without key

Auswechselbare Klingen  
Interchangeable blades



|                    | B     |
|--------------------|-------|
| <b>1-06-011-00</b> | 5 mm  |
| <b>1-06-011-05</b> | 10 mm |
| <b>1-06-011-10</b> | 16 mm |
| <b>1-06-011-15</b> | 25 mm |

Flachmeißel  
Chisels



|                    | B     |
|--------------------|-------|
| <b>1-06-012-00</b> | 5 mm  |
| <b>1-06-012-05</b> | 10 mm |
| <b>1-06-012-10</b> | 16 mm |
| <b>1-06-012-15</b> | 25 mm |

Osteotome  
Osteotomes



|                    | Radius |
|--------------------|--------|
| <b>1-06-013-00</b> | 50 mm  |
| <b>1-06-013-05</b> | 60 mm  |
| <b>1-06-013-10</b> | 70 mm  |

Hohlmeißel  
Gouges

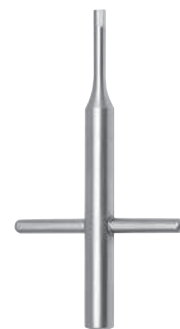


|                 |         |
|-----------------|---------|
| <b>1-06-020</b> | SW 3 mm |
|-----------------|---------|

Schraube  
Screw

|                    |           |
|--------------------|-----------|
| <b>1-06-020-05</b> | SW 3.5 mm |
|--------------------|-----------|

Schraube,  
mit Schraubensicherung  
Screw,  
with screw retention



|                 |         |
|-----------------|---------|
| <b>1-06-019</b> | SW 3 mm |
|-----------------|---------|

Schlüssel  
Key

|                    |           |
|--------------------|-----------|
| <b>1-06-019-05</b> | SW 3.5 mm |
|--------------------|-----------|

Schlüssel  
Key



HOKE

| 140 mm – 5"        | B                       |
|--------------------|-------------------------|
| <b>1-06-026-01</b> | 3 mm – $\frac{1}{8}$ "  |
| <b>1-06-026-03</b> | 5 mm – $\frac{3}{16}$ " |
| <b>1-06-026-05</b> | 6 mm – $\frac{1}{4}$ "  |
| <b>1-06-026-07</b> | 8 mm – $\frac{5}{16}$ " |
| <b>1-06-026-09</b> | 9 mm – $\frac{3}{8}$ "  |
| <b>1-06-026-11</b> | 12 mm – $\frac{1}{2}$ " |
| <b>1-06-026-13</b> | 15 mm – $\frac{5}{8}$ " |

Osteotome, gerade, Griff Schlüsselweite 8mm Achtkant  
*Osteotomes, straight, handle octagonal  $\frac{5}{16}$ "*



HOKE

| 140 mm – 5"        | B                       |
|--------------------|-------------------------|
| <b>1-06-028-01</b> | 3 mm – $\frac{1}{8}$ "  |
| <b>1-06-028-03</b> | 5 mm – $\frac{3}{16}$ " |
| <b>1-06-028-05</b> | 6 mm – $\frac{1}{4}$ "  |
| <b>1-06-028-07</b> | 8 mm – $\frac{5}{16}$ " |
| <b>1-06-028-09</b> | 9 mm – $\frac{3}{8}$ "  |
| <b>1-06-028-11</b> | 12 mm – $\frac{1}{2}$ " |
| <b>1-06-028-13</b> | 15 mm – $\frac{5}{8}$ " |

Osteotome, gebogen, Griff Schlüsselweite 8mm Achtkant  
*Osteotomes, curved, handle octagonal  $\frac{5}{16}$ "*



SMILLIE

**1-06-040-04**170 mm –  $6\frac{3}{4}$ "

Meniskussmesser links  
*Meniscus knife left*



SMILLIE

**1-06-040-06**170 mm –  $6\frac{3}{4}$ "

Meniskussmesser rechts  
*Meniscus knife right*



SMILLIE

**1-06-042-02**170 mm –  $6\frac{3}{4}$ "

Meniskussmesser flach, gerade  
*Meniscus knife flat, straight*



**1-06-034-05**

280 mm – 11"

Gerade  
*Straight*



**1-06-034-10**

280 mm – 11"

Leicht gebogen  
*Slightly curved*



**1-06-034-15**

280 mm – 11"

Stark gebogen  
*Full curved*



**1-06-034-20**

280 mm – 11"

Rückwärts gebogen  
*Reverse curved*

**COBB**

Hohlmeißel mit Edelstahlgriff, hohl, Arbeitsteil 7.5 mm breit  
*Gouges with stainless steel handle, hollow, tip width 9/32"*



**1-06-035-06**

240 mm – 9½"

Gerade  
*Straight*



**1-06-035-12**

240 mm – 9½"

Leicht gebogen  
*Slightly curved*



**1-06-035-15**

240 mm – 9½"

Stark gebogen  
*Full curved*



**1-06-035-09**

240 mm – 9½"

Rückwärts gebogen  
*Reverse curved*

**COBB**

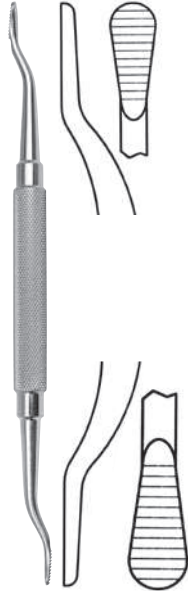
Hohlmeißel mit Sechskant-Griff, hohl, Arbeitsteil 7.5 mm breit  
*Gouges with hexagon handle, hollow, tip width 9/32"*



**1-08-001-05**

210 mm – 8 ¼"

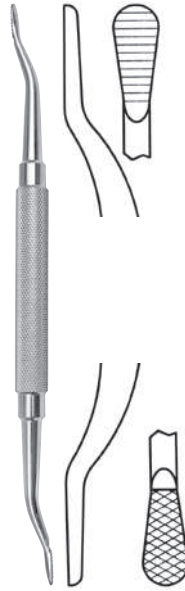
Knochenfeile Nr. 10  
Bone file No. 10



**1-08-001-10**

180 mm – 7"

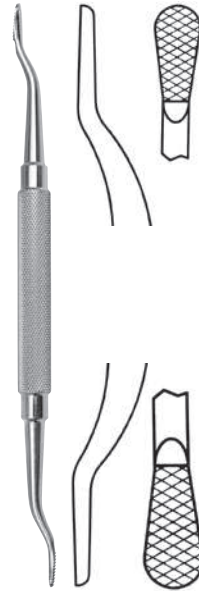
Knochenfeile Nr. 12  
Bone file No. 12



**1-08-001-15**

180 mm – 7"

Knochenfeile Nr. 12 A  
Bone file No. 12 A



**1-08-001-20**

180 mm – 7"

Knochenfeile Nr. 12 CA  
Bone file No. 12 CA



**1-08-001-25**

180 mm – 7"

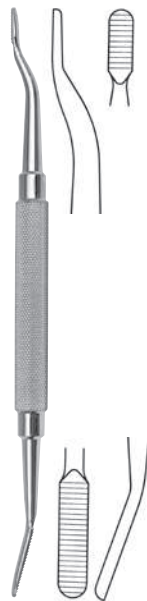
Knochenfeile Nr. 33  
Bone file No. 33



**1-08-001-30**

185 mm – 7 ¼"

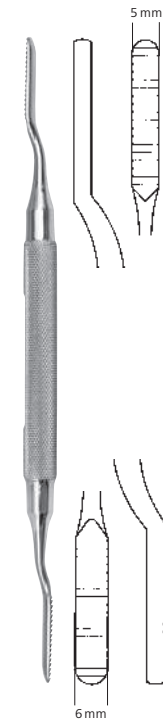
Knochenfeile Nr. 45  
Bone file No. 45



**1-08-001-35**

185 mm – 7 ¼"

Knochenfeile Nr. 64  
Bone file No. 64



POLOKOFF

**1-08-001-40**

200 mm – 8"



POLOKOFF

**1-08-001-42**

190 mm – 7 ½"





**1-15-003-02**

190 mm – 7½"

Knochenmeßzirkel, gebogen  
*Bone calipers, curved*



RANEY

**1-20-004-05**

Kopfhautclip, VE 1 Beutel (12 Stück)  
*Scalp clip, PAK: 1 bag (12 pieces)*



**1-15-002-02**

200 mm – 8"

Knochenmeßzirkel, gerade, spitz  
*Bone calipers, straight, pointed*



**1-15-004-02**

180 mm – 7"

Knochenmeßzirkel, abgewinkelt, stumpf  
*Bone calipers, angled, blunt*



PERCY

**1-15-020-01**

Amputationsschild, Griffe abnehmbar  
*Amputation retractor, removable handles*



SWEET

**1-15-022-01**

Amputationsschild  
*Amputation retractor*

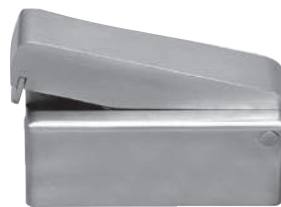


COTTLE

**1-15-040-10**

15 x 89 mm

Entnahmepinzette  
*Cartilage removing forceps*



COTTLE

**1-15-040-02**

Knorpelquetsche  
*Cartilage crusher*

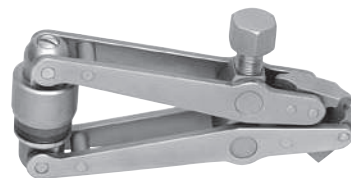


CRULL

**1-15-030-02**

200 mm – 8"

Hüftmesser  
*Acetabular knife*



**1-15-050-01**

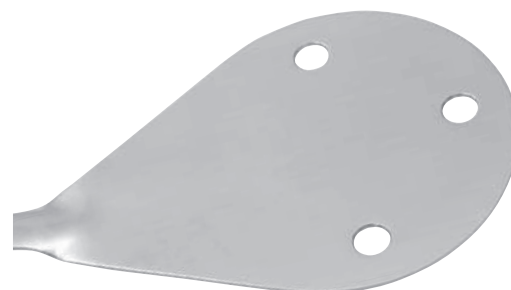
Plattenspanner mit Gelenken und Bohrung Ø 5.0 mm  
*Tension device, articulated, hole Ø 5.0 mm*



**1-15-062-02**

120 mm – 4¾"

Biegebolzen für Drähte, Bohrung Ø 2.8 mm  
*Bending rod, hole Ø 2.8 mm*



KUNTSCHER

**1-15-306-02**

Hautschutzblech  
*Skin protector*



|                    |               |          |
|--------------------|---------------|----------|
| <b>1-15-520-04</b> | 3 Loch / hole | Ø 1.2 mm |
| <b>1-15-520-06</b> | 3 Loch / hole | Ø 2.0 mm |

Zielbohr-Büchsen  
Parallel drill guides and drill sleeves



|                    |          |          |
|--------------------|----------|----------|
| <b>1-15-530-02</b> | Ø 3.2 mm | Ø 4.5 mm |
| <b>1-15-530-04</b> | Ø 2.5 mm | Ø 3.5 mm |

Steckbohr-Büchsen  
Insert drill sleeves



|                    |          |           |
|--------------------|----------|-----------|
| <b>1-15-532-02</b> | Ø 1.5 mm | Ø 1.1 mm  |
| <b>1-15-532-04</b> | Ø 2.0 mm | Ø 1.5 mm  |
| <b>1-15-532-05</b> | Ø 2.7 mm | Ø 1.25 mm |
| <b>1-15-532-06</b> | Ø 2.7 mm | Ø 2.0 mm  |
| <b>1-15-532-08</b> | Ø 3.5 mm | Ø 2.5 mm  |
| <b>1-15-532-10</b> | Ø 4.5 mm | Ø 3.2 mm  |
| <b>1-15-532-11</b> | Ø 4.5 mm | Ø 3.2 mm  |
| <b>1-15-532-12</b> | Ø 6.5 mm | Ø 3.2 mm  |

Doppelbohr-Büchsen  
Double drill sleeves



|                    |          |
|--------------------|----------|
| <b>1-15-536-02</b> | Ø 3.2 mm |
|--------------------|----------|

Büchse für Halbrohr und Formplatte  
Tap sleeve



|                    |          |          |
|--------------------|----------|----------|
| <b>1-15-538-02</b> | Ø 1.5 mm | Ø 2.0 mm |
| <b>1-15-538-04</b> | Ø 2.0 mm | Ø 2.7 mm |
| <b>1-15-538-06</b> | Ø 2.5 mm | Ø 3.5 mm |
| <b>1-15-538-08</b> | Ø 3.2 mm | Ø 4.5 mm |

Spanngleit-Bohr-Büchsen  
Drill guides



|                    |        |        |
|--------------------|--------|--------|
| <b>1-15-550-06</b> | 55 mm  | 1.0 mm |
| <b>1-15-550-02</b> | 60 mm  | 1.7 mm |
| <b>1-15-550-04</b> | 110 mm | 2.5 mm |

Tiefenmeßlehre    Meßbereich    Ø Nadel  
Screw depth gauge    Scale    Ø Needle

Weitere Modelle auf Anfrage  
Additional models available upon request



CAROLL

**1-20-002**

140 mm – 5½"

Fingerwinkelmesser  
*Goniometer*



MARCHAC

**1-20-018-01**

0 - 80 mm

Meßschieber  
*Caliper*



TOWNLY FEMUR

**1-20-018-10**

0 - 100 mm

Meßschieber  
*Caliper*



**1-20-022-05**

0 - 145 mm

L: 115 mm

Meßschieber  
*Caliper*



**1-20-028-05**

0 - 125 mm

L: 100 mm

Meßschieber  
*Caliper*



WEISENBACH

**1-20-030-02**

150 mm – 6"

**1-20-030-06**

300 mm – 12"

Instrumentenhalter  
*Forceps holder*

**1-15-001-04**

Drahtwirbler  
*Jet wire twister*

**1-20-090-05**

Schraubenhaltepinzette  
Maulbreite 5 mm  
*Screw holding forceps  
Working part 5 mm*

**1-20-090-10**

Schraubenhaltepinzette  
Maulbreite 7 mm  
*Screw holding forceps  
Working part 7 mm*

**2-15-005-01**

146 mm – 5½"

Biegeisen für 2.7 mm  
und 3.5 mm Platten  
*Bending Iron for 2.7 mm  
and 3.5 mm plates*

**2-15-005-05**

146 mm – 5½"

Biegeisen für 3.5 mm  
und 2.7 mm Platten  
*Bending Iron for 3.5 mm  
and 2.7 mm plates*

**2-15-007-01**

120 mm – 4¾"

Biegeisen für  
1.8 mm Platten  
*Bending Iron for  
1.8 mm plates*

**2-15-010-01**

194 mm – 7⅝"

Biegeisen für 3.5 mm  
und 4.5 mm Platten  
*Bending Iron for 3.5 mm  
and 4.5 mm plates*



**KUNTSCHER**

**2-15-020-02**

290 mm – Ø9 mm

Knochenahle,  
nach unten gebogen  
*Awl, curved downwards*



**KUNTSCHER**

**2-15-020-04**

290 mm – Ø9 mm

Knochenahle,  
nach oben gebogen  
*Awl, curved upwards*



**1-20-100-01**

160 mm – 6½"

Knochenahle, gerade  
*Bone awl, straight*



**1-20-100-03**

160 mm – 6½"

Knochenahle, gebogen  
*Bone awl, curved*

